

Notes:

This drawing and design are copyright and may not be reproduced without the written consent of JYM Partnership. All dimensions are to be checked and worked on site prior to ground. Size of and dimensions to any structural elements are indicative only. See structural engineers drawing for actual sizes / dimensions. Size of and dimensions to any service elements are indicative only. See services engineers drawing for actual sizes and dimensions. The drawing to be read in conjunction with all relevant Architects drawings, specifications and/or bill of quantities as issued with other Consultant's information. If it should please ask. **DO NOT SCALE FROM THIS DRAWING.**

Rev	Date	Revision
A	04.10.11	M&P ridge chimney & kitchen window added as per Planning Authority request.



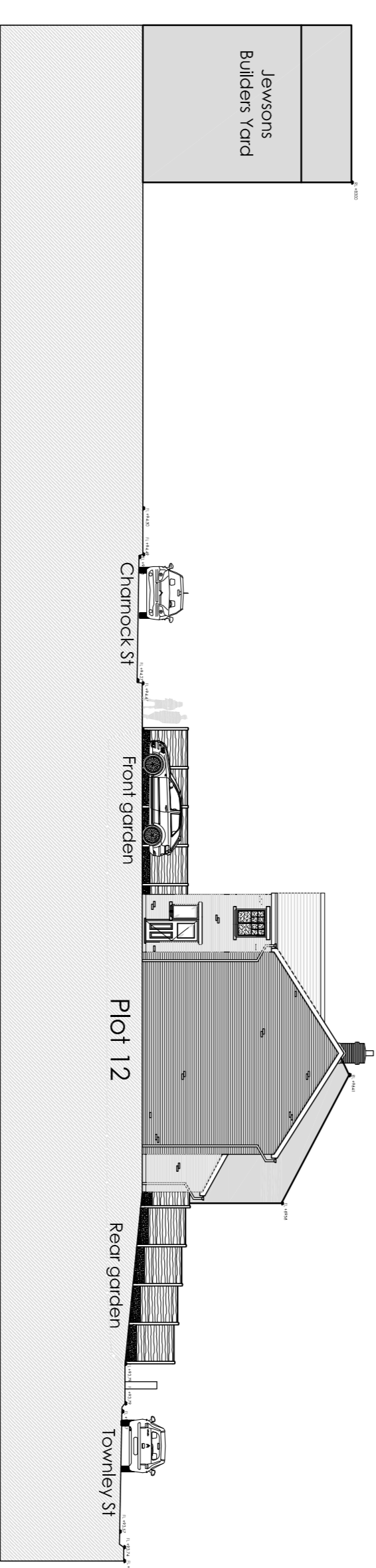
PROPOSED East Site Elevation - Section DD.
Scale 1:200 of A1.



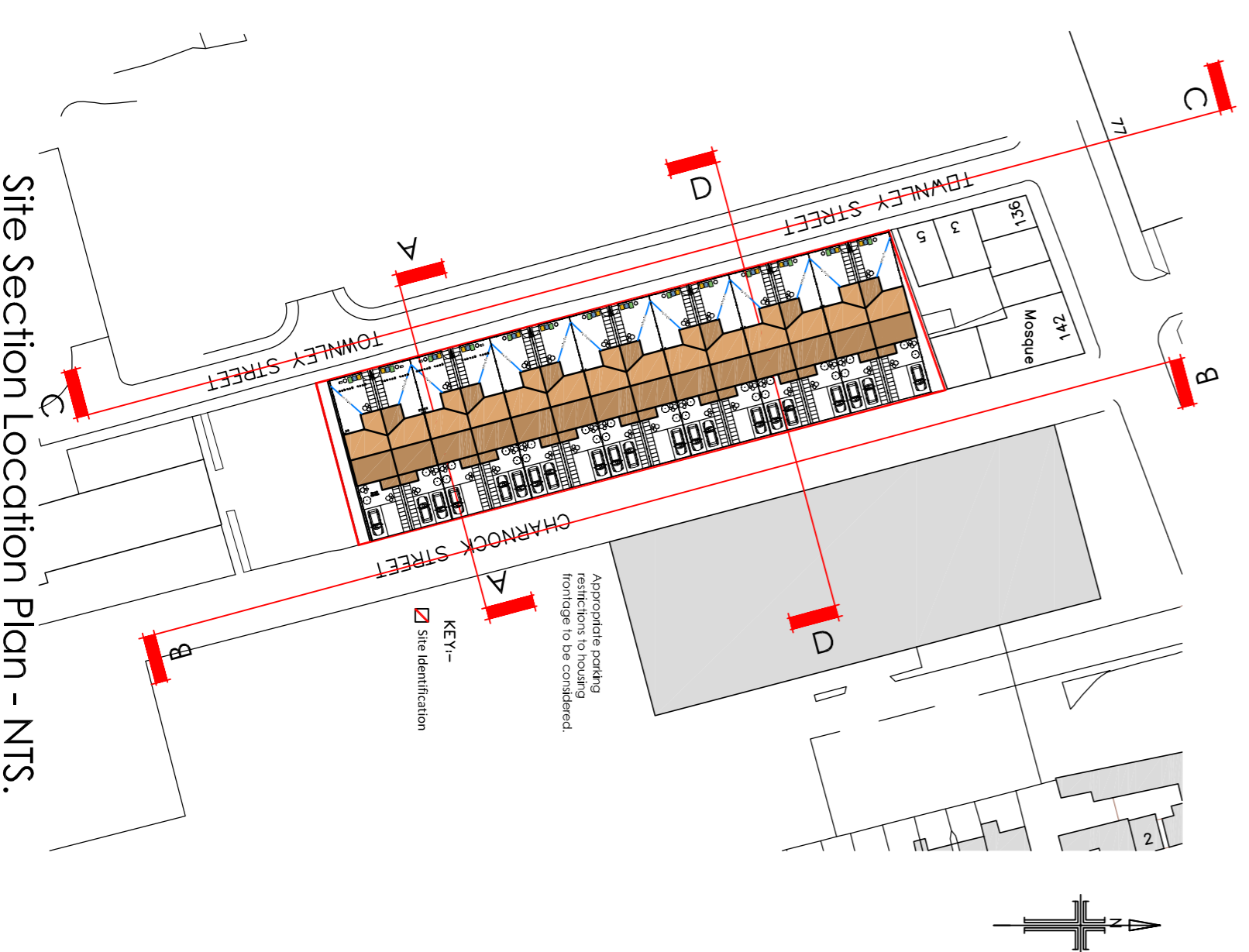
PROPOSED West Site Elevation - Section BB.
Scale 1:200 of A1.



PROPOSED East Site Elevation - Section CC.
Scale 1:200 of A1.



PROPOSED South Site Elevation - Section AA.
Scale 1:200 of A1.



Site Section Location Plan - NTS.

Rev	Date	Revision
0922	27	A

Oak House 28 Scapple Way Bomber Bridge Preston PR5 6AW Tel : 01772 323666 Fax : 01772 338611 Email : jym@jympartnership.co.uk www.jympartnership.co.uk	
Project:	Residential Redevelopment of Townley Street
Client:	Erinwood Construction LLP
Drawing title:	PROPOSED Site Sections / Elevations
Scale:	1:200 of A1.
Drawn:	JJC
Checked:	CM
Date:	4th October 2011.
Project no.	0922
Dwg. no.	27
Rev.	A